

PENNZOIL PLACE

THE HOUSTON ICON

YOUR VISION MADE REALITY  
LEVELS 1-2

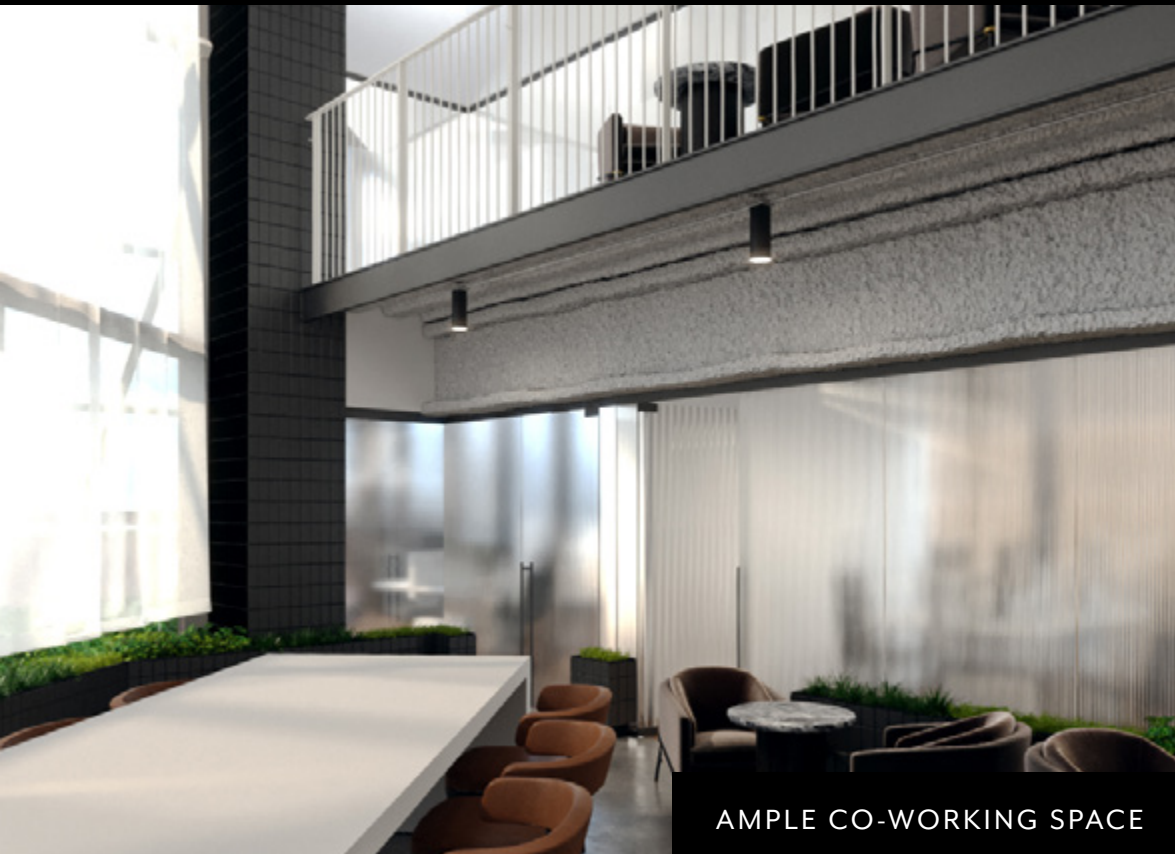
METROPOLIS





# CREATE YOUR DREAM SPACE

DIRECT ACCESS TO 1ST FLOOR, MEZZANINE AND 2ND FLOOR  
20,520 SF



READY TO DESIGN YOUR WAY





# PREMIER PRESENCE

LOBBY LEVEL 5,351 SF



CLICK TO VIEW VIRTUAL TOUR

# ENDLESS POSSIBILITIES

MEZZANINE LEVEL 941 SF



CLICK TO VIEW VIRTUAL TOUR



# READY WHEN YOU ARE

DIRECT ACCESS TO 1ST FLOOR, MEZZANINE AND 2ND FLOOR  
20,520 SF



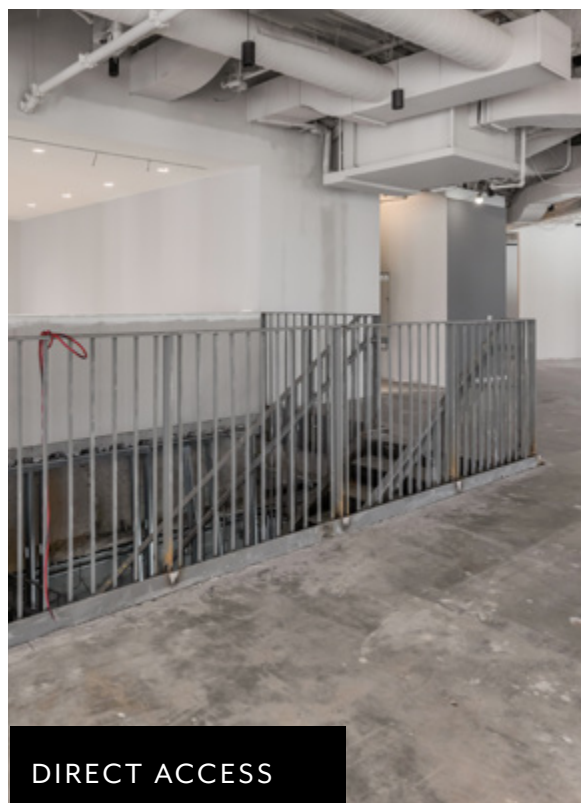
AMAZING VIEWS



PRECEDENT OFFICE/CONFERENCING



OPEN CONCEPT



DIRECT ACCESS



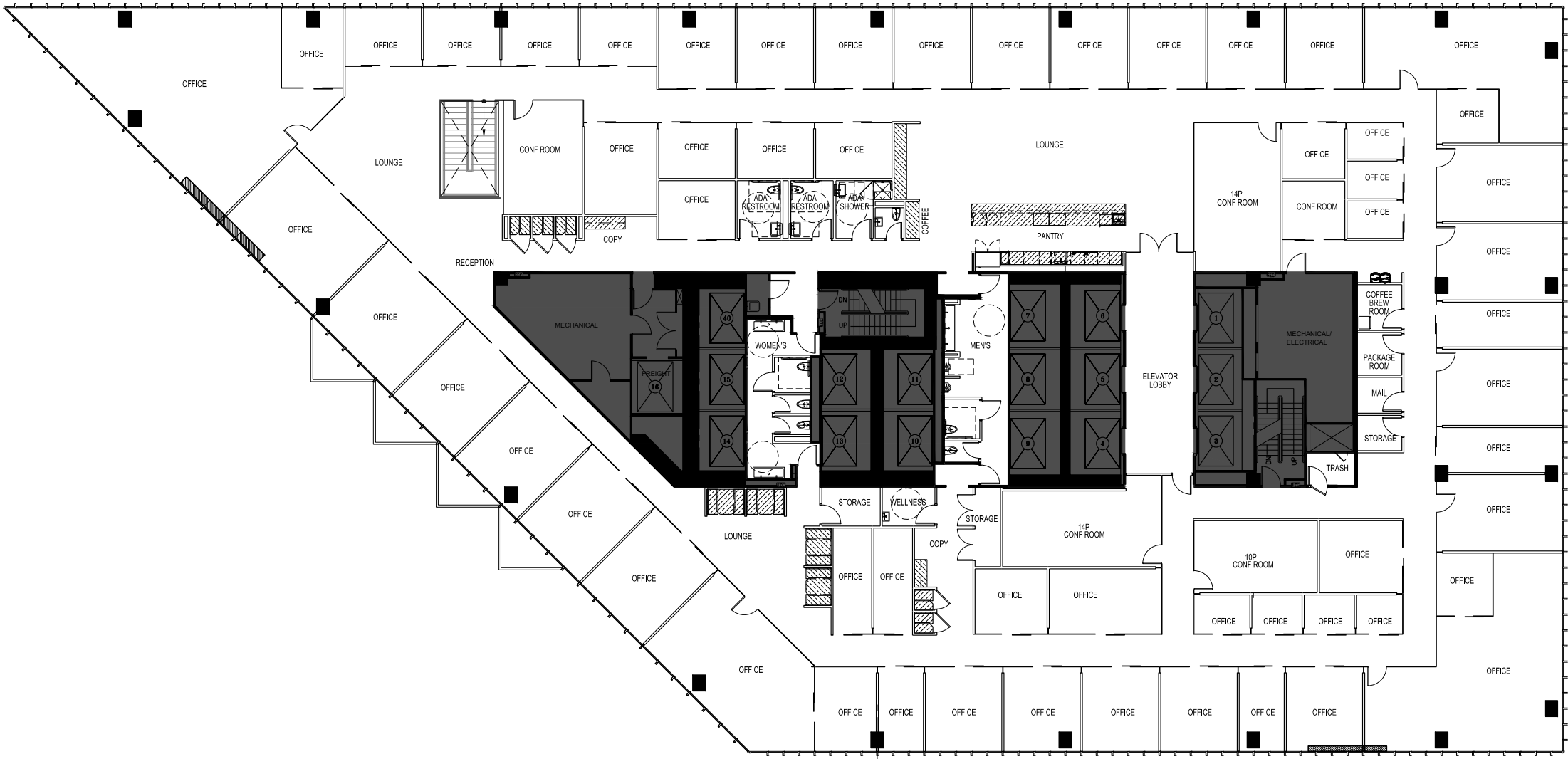
PRECEDENT INDIVIDUAL OFFICES



# READY WHEN YOU ARE



2ND FLOOR 20,520 SF



CLICK TO VIEW VIRTUAL TOUR



PENNZOIL PLACE  
[pennzoilplace.com](http://pennzoilplace.com)

**Tyler Garrett | Managing Director**  
AGENCY LEASING  
713-425-1802  
[tyler.garrett@jll.com](mailto:tyler.garrett@jll.com)

**Matt Pruitt | Vice President**  
AGENCY LEASING  
713 888 4089  
[matt.pruitt@jll.com](mailto:matt.pruitt@jll.com)

**Christian Canion | Senior Associate**  
AGENCY LEASING  
713 888 4090  
[christian.canion@jll.com](mailto:christian.canion@jll.com)



METROPOLIS